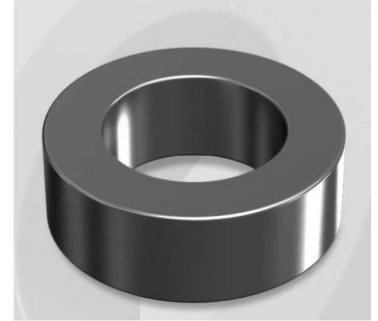


CH358060GTS

Electrical Characteristics

Material	Permeability (μ)	AL \pm 8% (nH/N ²)	DCB (% min) @ 100 Oe	Coreloss (mW/cm ² , max) @50kHz, 1000G
High Flux GTS	60	56	80.08	130

OD : 358G



Core Dimensions

Dimensions		Uncoated (Before)		Coated (After)		Color	Packaging
		(mm)	(inch)	(mm)	(inch)		
OD	(Max)	35.81	1.410	36.70	1.445	Black	Box Qty = 240pcs
ID	(min)	22.35	0.880	21.50	0.846		
HT	(max)	10.46	0.412	11.28	0.444		

Physical Characteristics

Cross Section (A)	Path Length (l)	Window Area (Wa)	Volume (V)	Breakdown Voltage (Vac)
0.678 cm ²	8.98 cm	3.64 cm ²	6.0884 cm ³	1,000
0.10509 in ²	3.535 in	718,374 cmil	0.3715 in ³	

Winding Information

0% Winding length/turn (cm)		
3.776		
40% winding factor Surface Area (cm ²)		
56.09		
40% Wound Di.(mm)		
OD	ID	HT
42.15	14.09	17.71

Typical DC Bias Performance

